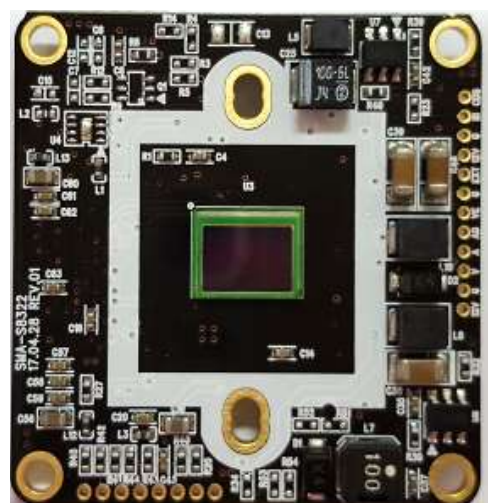


# 2MP Module - 32X32mm

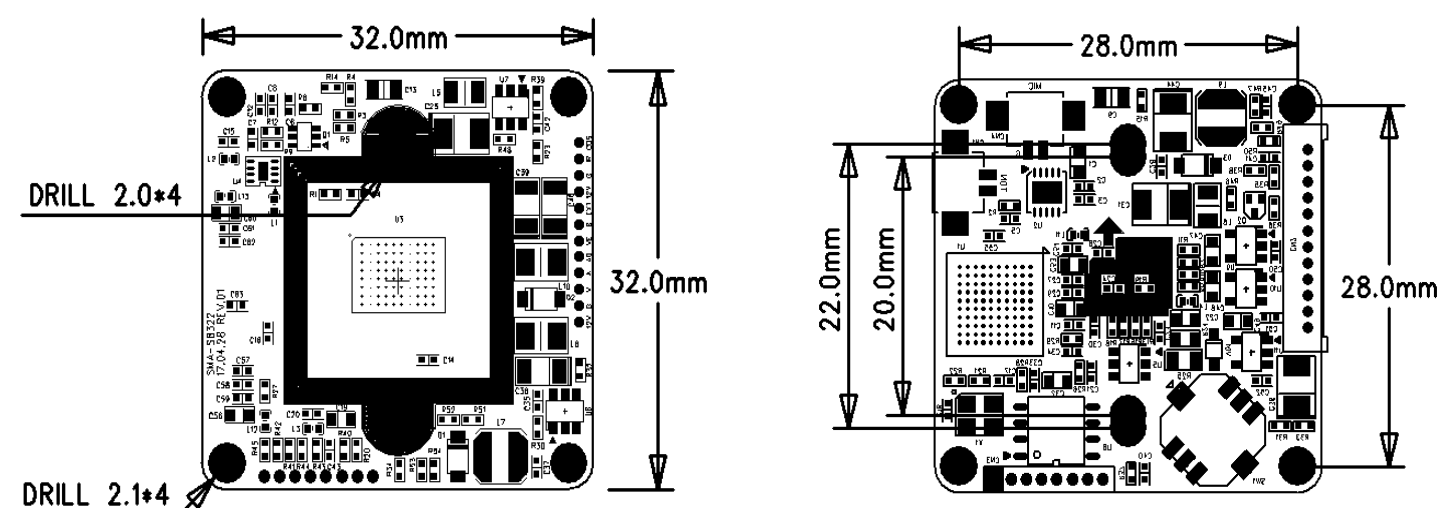
Model Number : SMX-1D40D32A



## • Product Highlight

- 1/2.9" 2.1MP SONY Progressive Scan Color CMOS Sensor
- AHD / TVI / CVI / CVBS Simultaneous Output
- 3DNR / D-WDR
- Sens up X 30
- OSD
- Support AUDIO

## • Dimensions



## • Specification

Item	SMX-1D40D32A	
Imaging Sensor	1/2.9" 2.1Megapixel COMS	
Scanning System	Progressive Scan	
Number of effective pixels	1985(H) X 1105(V) = 2,19M(pixel)	
Total number of pixels	2001(H) X 1121(V) = 2,24M(pixel)	
S/N Ratio	More than 50dB	
Video Output Mode	1080P(1920 X 1080) 25P/30P	
Video Output Level	HD-SDI, EX-SDI1.0, EX-SDI2.0 / AHD2.0, HD-TVI, HD-CVI / CVBS Simultaneous output	
Min. Illumination	1.0Lux(Color) , 0.5Lux(BW) , 0.02Lux(Sens-up x32)	
O.S.D	Built-in	
Audio	Audio in / out Support	
Electronic Shutter Speed	AUTO / FLK	
	NTSC : 1/30sec ~ 1/50,000sec	PAL : 1/25sec ~ 1/50,000sec
AGC	0 ~ 15 Step	
Sens-up	AUTO / OFF (x2 ~ x30)	
D-WDR	ON / OFF / AUTO	
DEFOG	OFF / AUTO	
Backlight Compensation	BLC / HSBLC / OFF	
White Balance	ATW / AWC-SET / INDOOR / OUTDOOR / MANUAL / AWB	
Day & Night	AUTO / COLOR / BW / EXT	
DNR	2DNR / 3DNR	
D - Effect	FREEZE / MIRROR / Neg. IMAGE	
Motion Detection	ON / OFF (4 Zone Selectable)	
Privacy Masking	ON / OFF (4 Zone Selectable)	
Language	English / Chinese / German / French / Italian / Spanish / Polish / Russian / Portuguese / Dutch	
Defect	Live DPC / White DPC / Black DPC	
Protocol	AHD : A-CP / TVI : HIKVISION-C / CVI : HD-CVI	
Adjust	Sharpness / Monitor / LSC / NTSC PAL	
Supplied Voltage	DC12 +/- 10%	
Power Consumption	Max. 1.44W[120mA]	
Dimension	32(W) X 32(H) X 1.2(t)mm	
Weight	7g	