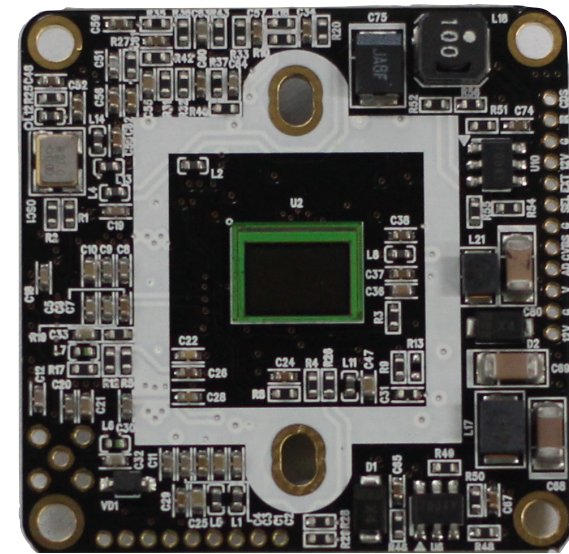


2MP Module - 32X32mm

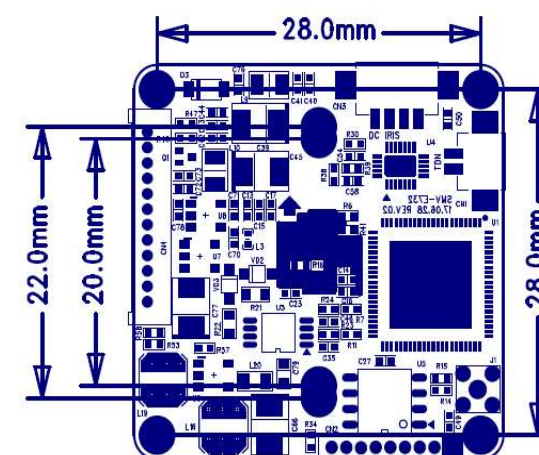
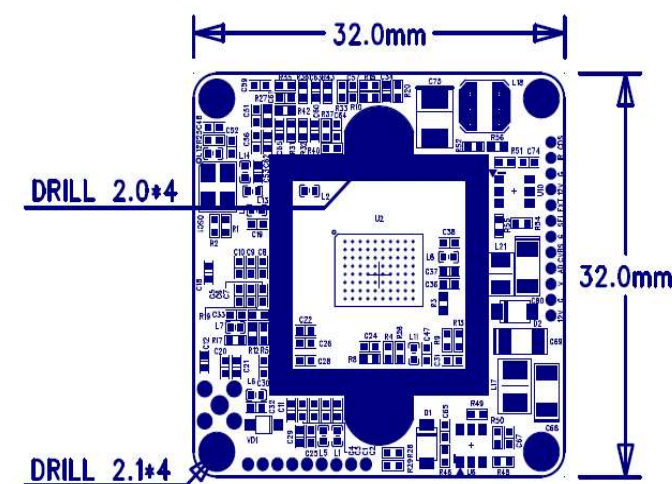
Model Number : SMX-1D71D32



• Product Highlight

- 1/2.9" 2.1MP SONY Progressive Scan Color CMOS Sensor
- HD-SDI, EX-SDI / AHD, TVI, CVI (1080P) / CVBS Simultaneous Output
- WDR
- 2D&3DNR
- ACE

• Dimensions



• Specification

Item	SMX-1D71D32	
Imaging Sensor	1/2.9" 2.1Megapixel COMS	
Scanning System	Progressive Scan	
Number of effective pixels	1985(H) X 1105(V) = 2,19M(pixel)	
Total number of pixels	2001(H) X 1121(V) = 2,24M(pixel)	
S/N Ratio	More than 50dB	
Video Output Mode	1080P(1920 X 1080) 25P/30P	
Video Output Level	HD-SDI, EX-SDI1.0, EX-SDI2.0 / AHD2.0, HD-TVI, HD-CVI / CVBS Simultaneous output	
Min. Illumination	1.0Lux(Color) , 0.5Lux(BW) , 0.02Lux(Sens-up x32)	
O.S.D	Built-in	
Electronic Shutter Speed	AUTO / FLICKER / MANUAL	
	NTSC : 1/30sec ~ 1/30,000sec	PAL : 1/25sec ~ 1/25,000sec
AGC	0 ~ 10 Step	
Sens-up	OFF / x2 / x4 / x8 / x16 / x32	
ACE	OFF / LOW / MIDDLE / HIGH	
DEFOG	ON / OFF	
Backlight Compensation	OFF / BLC / HLC / WDR	
COLOR(White Balance)	AUTO / AUTOext / PRESET / MANUAL	
Day & Night	AUTO / COLOR / BW / EXTTRN	
DNR	OFF / LOW / MIDDLE / HIGH	
FOCUS ADJ	On / Off	
Motion Detection	On / Off (4 ZONE)	
Privacy Masking	On / Off (16 ZONE)	
Language	ENGLISH / CHINESES(简) / CHINESES(繁) / JAPANESE / KOREAN	
Supplied Voltage	DC12 ±10%	
Power Consumption	Max. 1.32W[110mA]	
Dimension	32(W)X32(H)X1.2(t)mm	
Weight	8g	