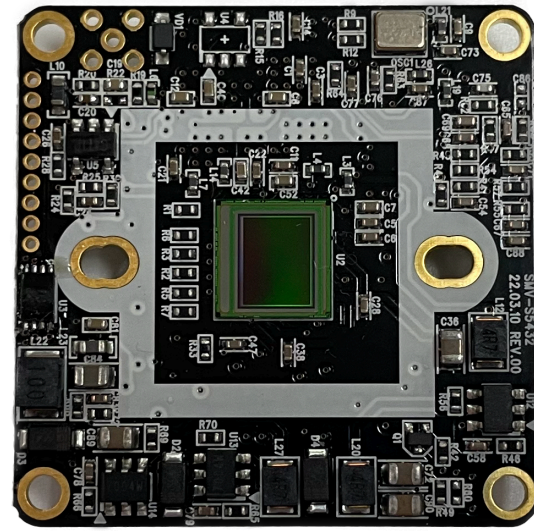


# 4MP Module - 42X42mm

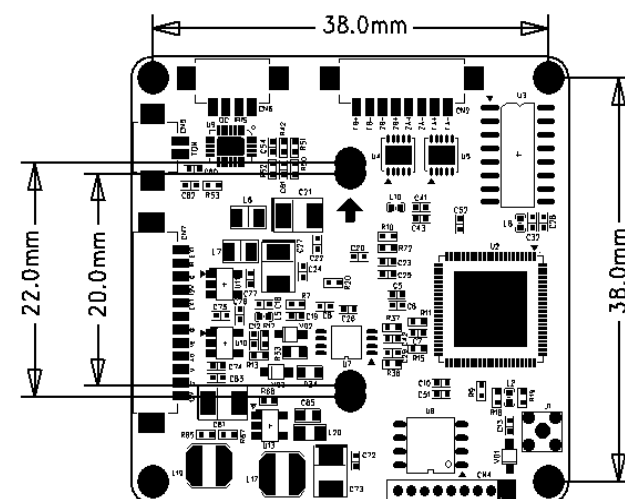
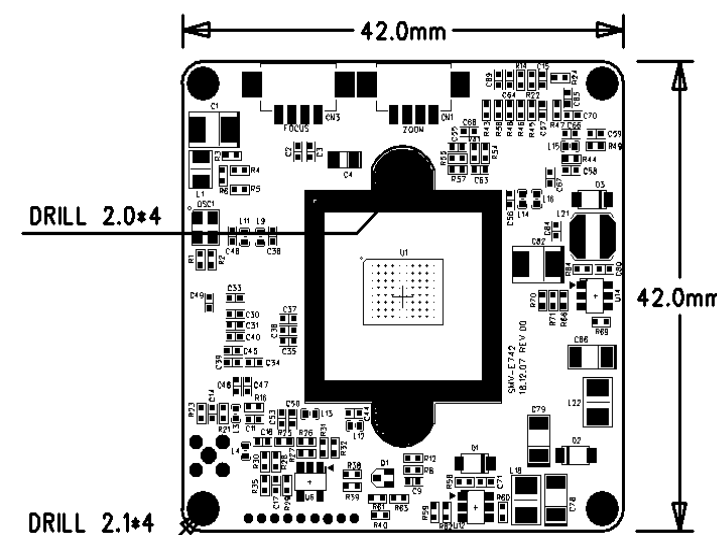
Model Number : SMX-1G81D42



## • Product Highlight

- 1/2.8" 5.14MP SONY Progressive Scan Color CMOS Sensor
- AHD, TVI, CVI, CVBS or EX-SDI
- Output Resolution 2MP / 4MP / 5MP
- Real WDR at 30fps
- 3DNR (Digital Noise Reduction 2D + 3D)

## • Dimensions



## • Specification

Item	SMX-1G81D42	
Imaging Sensor	1/2.8" 5.14Megapixel COMS	
Scanning System	Progressive Scan	
S/N Ratio	More then 50dB	
Video Output Size	2M(16:9) : 1920X1080 25/30fps, 4M(16:9) : 2560X1440 25/30fps, 5M(4:3) : 2592X1944 20fps	
Video Output Level	AHD / TVI / CVI / CVBS or EX-SDI	
UTC (Up The Coaxial)	Yes	
Min. Illumination	Color : 1.0Lux / B&W : 0.5Lux	
OSD	Built in	
Electronic Shutter Speed	AUTO / FLICKER / MANUAL	
	NTSC : 1/30sec ~ 1/30,000sec	PAL : 1/25sec ~ 1/25,000sec
Brightness	0 ~ 20 Step	
AGC	0 ~ 10 Step	
Sens-up	OFF / X2 ~ X32	
Backlight Compensation	OFF / HLC / BLC / WDR	
Day & Night	AUTO / COLOR / B&W / EXTERN	
White Balance	AUTO / AUTOext / PRESET / MANUAL	
DNR	OFF / LOW / MIDDLE / HIGH	
Sharpness	0 ~ 10 Step	
Mirror	OFF / ON	
Flip	OFF / ON	
ACE (D-WDR)	OFF / LOW / MIDDLE / HIGH	
Defog	OFF / ON	
Shading	OFF / ON	
Privacy Mask	24 Masks (BOX16 / POLYGON 8)	
Motion Detection	OFF / ON	
Language	English, Korean, Chinese, Japanese	
Operating Condition	-10°C~ +50°C, under 90% humidity	
Supplied voltage	DC12 ±10%	
Power Consumption	150mA (Max)	
Dimension	42(W) X 42(H) X 1.2(t)mm	
Weight	8g	