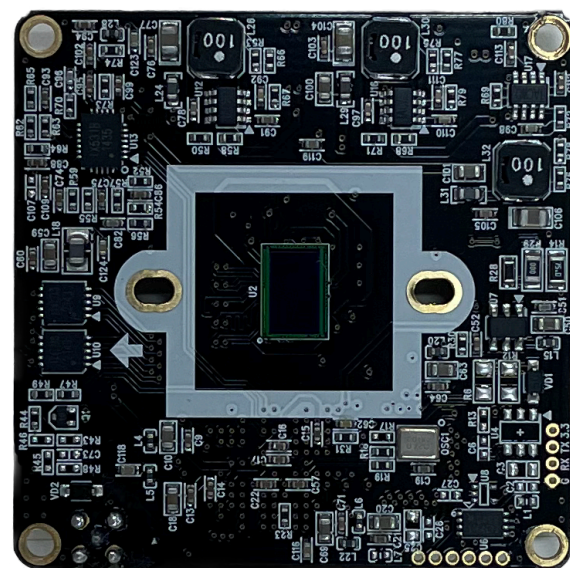


8MP Module - 42X42mm

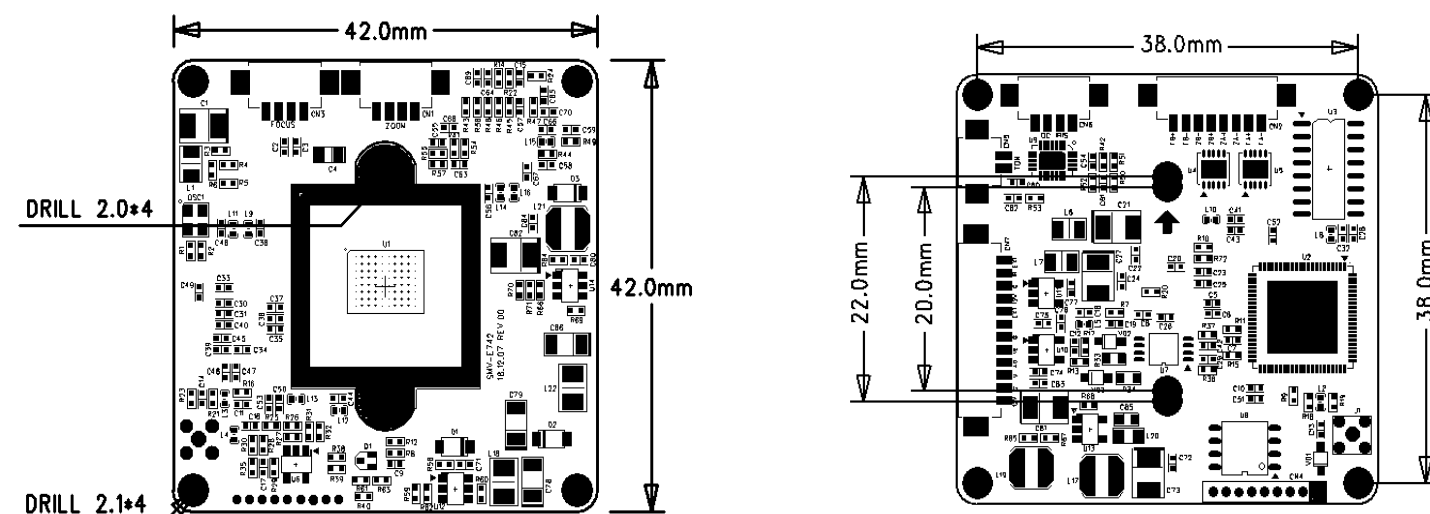
Model Number : SMX-1L81D42



• Product Highlight

- 1/2.8" 8.40MP SONY Progressive Scan Color CMOS Sensor
- AHD, TVI, CVI, CVBS or EX-SDI
- Output Resolution 2MP / 4MP / 8MP
- Real WDR at 15fps
- 3DNR (Digital Noise Reduction 2D + 3D)

• Dimensions



• Specification

| | | |
|--------------------------|---|-----------------------------|
| Item | SMX-1L81D42 | |
| Imaging Sensor | 1/2.8" 8.40 Megapixel COMS | |
| Scanning System | Progressive Scan | |
| S/N Ratio | More then 50dB | |
| Video Output Size | 8.29M(16:9) : 3840 X 2160 15fps, 1920X1080 25/30fps, 2560X1440 25/30fps | |
| Video Output Level | AHD / TVI / CVI / CVBS or EX-SDI | |
| Min. Illumination | Color : 1.0Lux / B&W : 0.5Lux | |
| OSD | Built in | |
| Electronic Shutter Speed | AUTO / FLICKER / MANUAL | |
| | NTSC : 1/30sec ~ 1/30,000sec | PAL : 1/25sec ~ 1/25,000sec |
| Brightness | 0 ~ 20 Step | |
| AGC | 0 ~ 10 Step | |
| Sens-up | OFF / X2 ~ X32 | |
| Backlight Compensation | OFF / HLC / BLC / WDR | |
| Day & Night | AUTO / COLOR / B&W / EXTERN | |
| White Balance | AUTO / AUTOext / PRESET / MANUAL | |
| DNR | OFF / LOW / MIDDLE / HIGH | |
| Sharpness | 0 ~ 10 Step | |
| Mirror | OFF / ON | |
| Flip | OFF / ON | |
| ACE (D-WDR) | OFF / LOW / MIDDLE / HIGH | |
| Defog | OFF / ON | |
| Shading | OFF / ON | |
| Privacy Mask | 24 Masks (BOX16 / POLYGON 8) | |
| Motion Detection | OFF / ON | |
| Language | English, Korean, Chinese, Japanese | |
| Operating Condition | -10°C~ +50°C, under 90% humidity | |
| Supplied voltage | DC12 ±10% | |
| Power Consumption | 160mA (Max) | |
| Dimension | 42(W) X 42(H) X 1.2(t)mm | |
| Weight | 10g | |